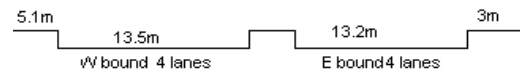
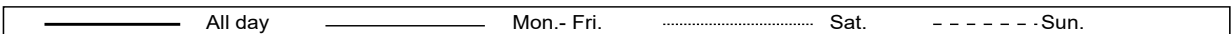
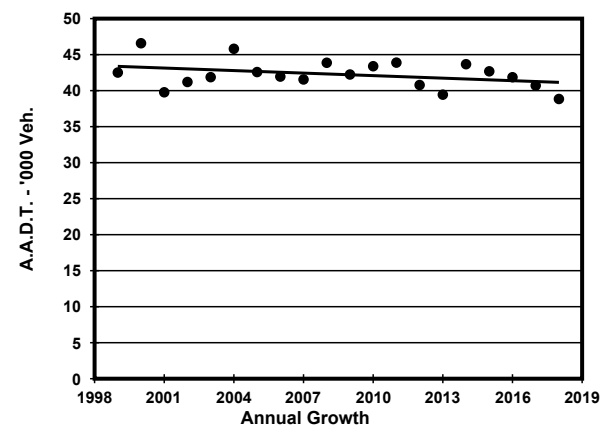
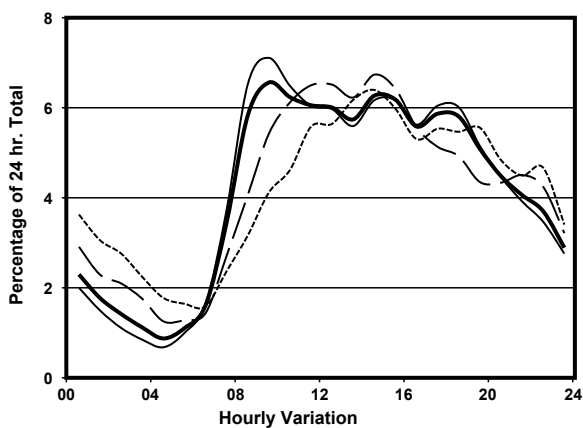
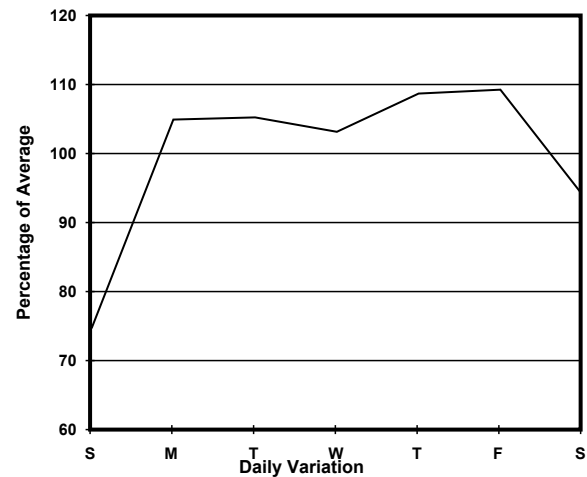
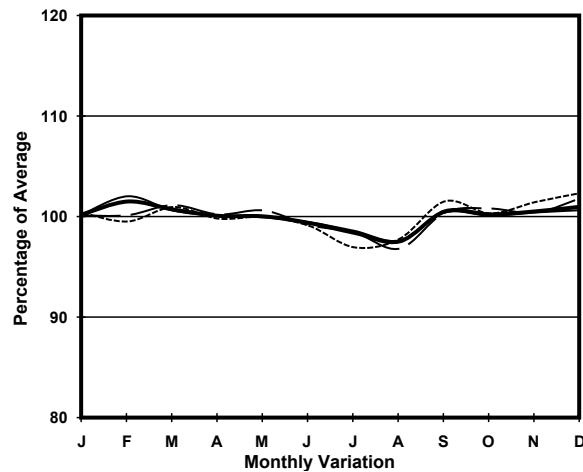


YEAR 2018
 COVERAGE (B) STATION 2207
 ROAD NETWORK MAJOR
 ROAD TYPE PRIMARY DISTRIBUTOR

LINK CONNAUGHT RD C (from CLEVERLY ST to GILMAN ST)



1. TRAFFIC FLOW VARIATION AND GROWTH



2. TRAFFIC CHARACTERISTICS (BY DIRECTION)

Parameter	All - Day	Mon. - Fri.	Sat.	Sun.
EAST BOUND				
A.A.D.T.	22060	23760	21050	16710
R 12 / 24 - %	69.6	71.5	66.3	60.3
R 16 / 24 - %	86.9	88.5	83.8	79.9
AM Peak Hour	0900-1000	0900-1000	0900-1000	0900-1000
One-way flow at AM peak hour	1450	1690	1140	690
T - % (AM)	-	18.1	-	-
PM Peak Hour	1700-1800	1700-1800	1600-1700	1700-1800
One-way flow at PM peak hour	1290	1440	1170	920
T - % (PM)	-	17.5	-	-
Prop.of commercial vehicles - 16 hr.	-	15.4	-	-
WEST BOUND				
A.A.D.T.	16780	18080	16010	12710
R 12 / 24 - %	69.6	71.5	66.3	60.4
R 16 / 24 - %	86.9	88.5	83.8	79.9
AM Peak Hour	0900-1000	0900-1000	0900-1000	0900-1000
One-way flow at AM peak hour	1100	1290	870	520
T - % (AM)	-	11.8	-	-
PM Peak Hour	1700-1800	1700-1800	1600-1700	1700-1800
One-way flow at PM peak hour	990	1090	890	700
T - % (PM)	-	20.4	-	-
Prop.of commercial vehicles - 16 hr.	-	13	-	-

3. OTHER INFORMATION AND COMMENT

Coverage (B) Station 2207
Year 2018

4. Vehicle classification and occupancy - Monday to Friday

Time		Class of vehicle									
		Motor Cycle	Private Car	Taxi	Private LB	PLB	Goods veh.		Non Fr. Bus	Fr. Bus	
							Light	M & H		SD	DD
0700-0800	Pro	2.3	13.9	43.8	2.1	1.3	14.4	3.3	3.9	0.1	14.9
	Ocp	1.0	1.2	1.8	6.9	9.2	1.4	1.7	21.9	1.0	26.2
0800-0900	Pro	2.5	22.8	35.5	0.5	1.7	11.2	1.5	7.1	0.0	17.1
	Ocp	1.1	1.4	1.8	4.3	8.5	1.6	1.7	34.5	0.0	40.0
0900-1000 Peak hour	Pro	2.9	34.9	31.4	0.4	1.2	13.7	1.6	1.5	0.0	12.4
	Ocp	1.1	1.4	2.0	2.3	8.0	1.8	1.7	23.1	0.0	20.4
1000-1100	Pro	2.6	29.0	39.3	0.7	1.2	16.0	1.2	1.0	0.0	8.9
	Ocp	1.0	1.4	1.8	2.8	4.1	1.5	1.5	9.0	0.0	14.3
1100-1200	Pro	2.1	33.2	33.2	0.5	0.8	20.4	0.5	1.3	0.0	7.9
	Ocp	1.0	1.4	2.0	4.0	11.0	1.7	2.0	16.3	0.0	16.0
1200-1300	Pro	3.5	38.0	32.2	0.8	0.9	13.8	2.1	1.2	0.1	7.4
	Ocp	1.0	1.5	2.1	3.4	10.3	1.6	1.6	9.0	1.0	13.8
1300-1400	Pro	2.9	40.7	29.8	0.5	0.7	14.5	0.9	1.3	0.0	8.7
	Ocp	1.0	1.4	2.0	2.7	9.3	1.5	1.6	9.4	0.0	14.4
1400-1500	Pro	1.9	39.4	31.8	0.0	0.6	15.2	1.1	1.8	0.0	8.0
	Ocp	1.1	1.5	2.1	0.0	8.8	1.6	1.4	14.3	0.0	14.3
1500-1600	Pro	2.8	39.7	30.8	0.3	0.3	16.0	0.9	1.4	0.1	7.7
	Ocp	1.2	1.4	2.0	5.5	10.5	1.6	1.7	15.0	1.0	11.2
1600-1700	Pro	2.9	42.7	23.2	0.8	1.0	15.9	0.7	3.6	0.0	9.3
	Ocp	1.0	1.5	2.1	2.4	7.3	1.6	1.0	13.8	0.0	12.8
1700-1800	Pro	4.0	41.7	25.7	0.7	0.6	8.6	0.4	5.3	0.0	13.0
	Ocp	1.1	1.5	2.1	3.5	14.0	1.4	1.5	27.3	0.0	15.3
1800-1900	Pro	3.3	43.1	27.2	0.9	1.1	6.3	0.7	5.1	0.0	12.3
	Ocp	1.2	1.5	2.0	2.8	7.5	1.5	1.0	22.4	0.0	23.7
1900-2000	Pro	3.8	43.0	34.7	0.0	0.5	2.9	0.0	4.3	0.0	10.8
	Ocp	1.0	1.4	2.1	0.0	12.0	1.6	0.0	25.6	0.0	18.5
2000-2100	Pro	4.0	31.1	46.0	0.2	1.2	3.2	0.2	3.0	0.1	11.0
	Ocp	1.1	1.6	1.9	1.0	8.3	1.5	2.0	14.7	1.0	10.9
2100-2200	Pro	3.7	31.2	45.8	0.5	1.2	2.7	0.2	1.7	0.1	12.7
	Ocp	1.1	1.6	2.1	3.0	2.2	1.5	3.0	17.3	1.0	13.8
2200-2300	Pro	2.8	28.9	49.2	0.0	1.8	2.6	1.0	1.0	0.1	12.6
	Ocp	1.3	1.7	2.0	0.0	4.1	1.2	2.3	12.3	1.0	12.1
16 hours	Pro	3.0	35.2	34.1	0.5	1.0	11.7	1.0	2.7	0.1	10.7
	Ocp	1.1	1.5	2.0	3.8	7.9	1.6	1.6	21.8	1.0	18.8

Legend

Pro. Proportion of vehicles in % (Sum may not add up to 100% due to figure rounding)*

Ocp. Average occupancy of vehicles including both driver and passengers*

M&H Medium and Heavy

***** All traffic data are collected from combined bounds except for one way traffic